

7800 Series

3-Terminal Fixed Positive Voltage Regulator

General Description

These voltage regulators are monolithic integrated circuits designed as fixed-voltage regulators for a wide variety of applications including local, on-card regulation. These regulators employ internal current limiting, thermal shutdown, and safe-area compensation. With adequate heatsink they can deliver output currents up to 1 ampere.

Although designed primarily as a fixed voltage regulator, these devices can be used with external components to obtain adjustable voltages and currents.

This series is offered in 3-pin TO-220, ITO-220 & TO-263 package.

TO-220



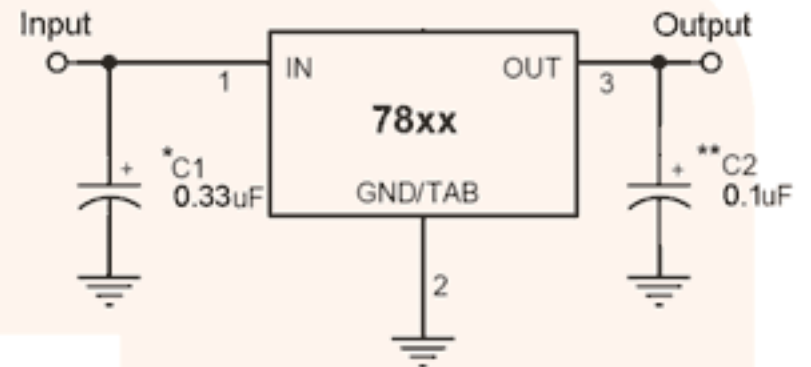
Pin Definition:

1. Input
2. Ground (tab)
3. Output

Features

- Output Voltage Range 5 to 24V
- Output current up to 1A
- No external components required
- Internal thermal overload protection
- Internal short-circuit current limiting
- Output transistor safe-area compensation
- Output voltage offered in 4% tolerance

Standard Application Circuit



A common ground is required between the input and the output voltages. The input voltage must remain typically 2.0V above the output voltage even during the low point on the Input ripple voltage.

XX = these two digits of the type number indicate voltage.

* = Cin is required if regulator is located an appreciable distance from power supply filter.

** = Co is not needed for stability; however, it does improve transient response.

Absolute Maximum Rating (Ta = 25°C unless otherwise noted)

Parameter	Symbol	Limit	Unit
Input Voltage	V _{IN} *	35	V
Input Voltage	V _{IN} **	40	V
Power Dissipation	P _D	Internal Limited	W
Operating Junction Temperature	T _J	0~+125	°C
Storage Temperature Range	T _{STG}	-65~+150	°C

7818 Electrical Characteristics

(V_{in}=24V, I_{out}=500mA, 0°C ≤ T_j ≤ 125°C, C_{in}=0.33uF, C_{out}=0.1uF; unless otherwise specified.)

Parameter	Symbol	Test Condition	Min	Typ	Max	Unit	
Output Voltage	V _{out}	T _j =25°C	17.30	18	18.72	V	
		21V ≤ V _{in} ≤ 33V, 10mA ≤ I _{out} ≤ 1A, P _D ≤ 15W	17.14	18	18.90		
Line Regulation	REG _{line}	T _j =25°C	21V ≤ V _{in} ≤ 33V	--	15	360	mV
			22V ≤ V _{in} ≤ 26V	--	5	180	
Load Regulation	REG _{load}	T _j =25°C	10mA ≤ I _{out} ≤ 1A	--	12	360	mV
			250mA ≤ I _{out} ≤ 750mA	--	4	180	
Quiescent Current	I _q	T _j =25°C, I _{out} =0	--	4.5	8	mA	
Quiescent Current Change	ΔI _q	21V ≤ V _{in} ≤ 33V	--	--	1		mA
		10mA ≤ I _{out} ≤ 1A	--	--	0.5		
Output Noise Voltage	V _n	10Hz ≤ f ≤ 100KHz, T _j =25°C	--	110	--	uV	
Ripple Rejection Ratio	RR	f=120Hz, 21V ≤ V _{in} ≤ 31V	54	70	--	dB	
Voltage Drop	V _{drop}	I _{out} =1.0A, T _j =25°C	--	2	--	V	
Output Resistance	R _{out}	f=1KHz	--	22	--	mΩ	
Output Short Circuit Current	I _{os}	T _j =25°C	--	200	--	mA	
Peak Output Current	I _{o peak}	T _j =25°C	--	2.2	--	A	
Temperature Coefficient of Output Voltage	ΔV _{out} /ΔT _j	I _{out} =10mA, 0°C ≤ T _j ≤ 125°C	--	-1	--	mV/°C	