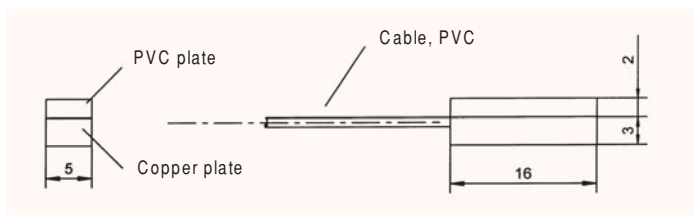


## TEMPERATURE

### Pt100 sensor, type FPA611

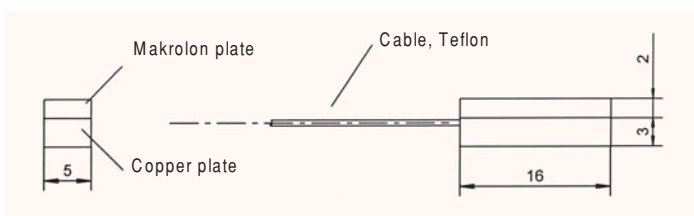


For surface measurement

Meas. element: Pt100, class B \*  
 Measuring tip: Operative range -10...+90 °C  
 Copper, level  
 T<sub>90</sub>: \* 20 s  
 Cable: 2 m PVC

Surface sensor **Order no FPA611**

### Pt100 sensor, type FPA611S01

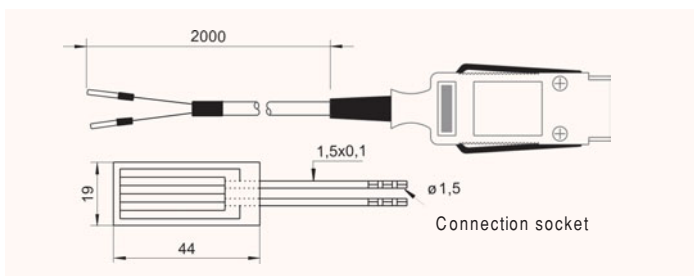


For surface measurement

Meas. element: Pt100, class B \*  
 Measuring tip: Operative range -10...+110 °C  
 Copper, level  
 T<sub>90</sub>: \* 20 s  
 Cable: 3 m Teflon  
 ALMEMO®-connector: resolution 0.01 °C

Surface sensor **Order no FPA611S01**

### Pt100 film sensor, type FPx685

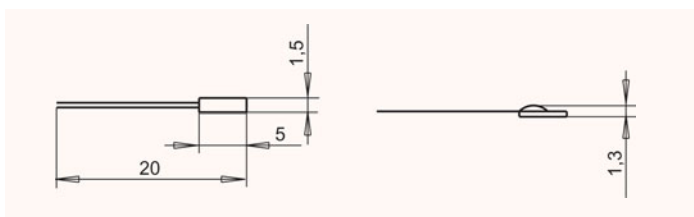


For surface measurement

Meas. element: Pt100, class B \*  
 Measuring tip: Operative range -80...+180 °C  
 Foil, 0.3 mm thick,  
 polyimide insulation  
 T<sub>90</sub>: \* 2 s

With free ends **Order no FP0685**  
 With connection socket **Order no FP96852**  
 ALMEMO® connecting cable, PVC (-20 to +80 °C),  
 2 meters, with connection pins **Order no ZTA685AK**

### Pt100 ceramic chip sensor element, type FP0802



Unprotected sensor element for constructing your own sensors

Meas. element: Pt100, class B \*  
 Measuring tip: Operative range -50...+400 °C  
 Ceramic chip sensor  
 Connection wires 15 mm, bare

Ceramic chip sensor **Order no FP0802**

10/2008 We reserve the right to make technical changes.

\* For general technical data, see page 08.03.