

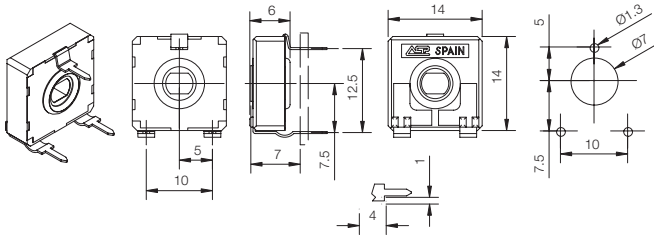
DRAWINGS CA14 // CE14

Tolerances 14 mm (in mm.):

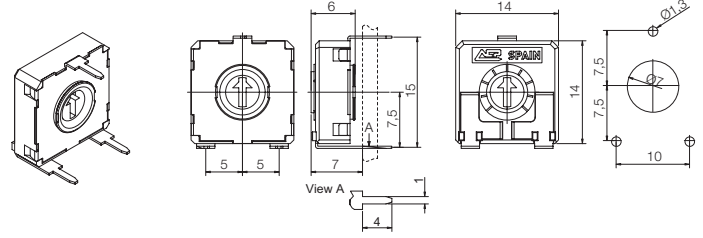
<1	±0,1
1...<10	±0,3
10...	±0,5

Model types. CA14 // CE14

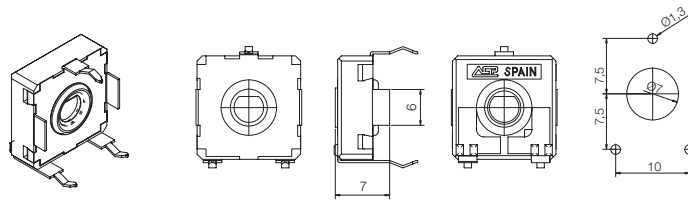
CA14 VR12,5 // CE14 VR12,5



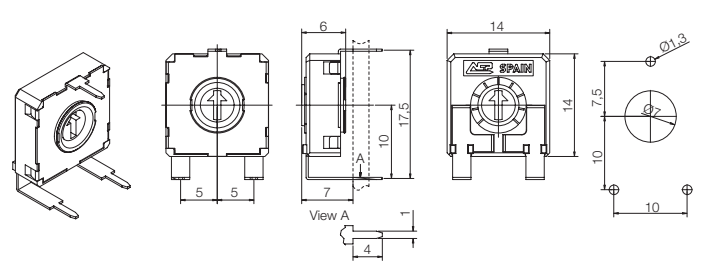
CA14 V15 // CE14 V15



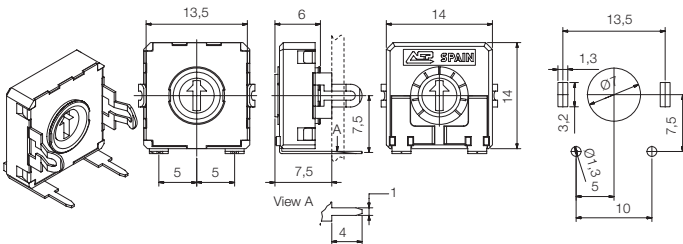
CA14 V15...CFF // CE14 V15...CFF



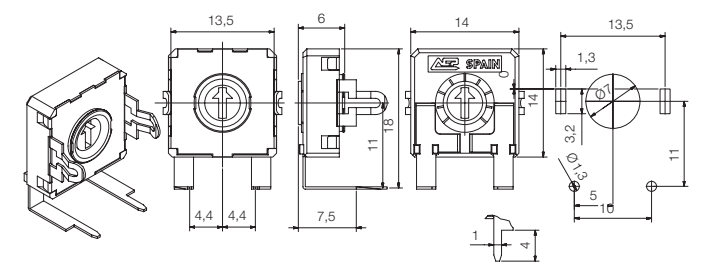
CA14 V17,5 // CE14 V17,5



CA14 VD7,5 // CE14 VD7,5

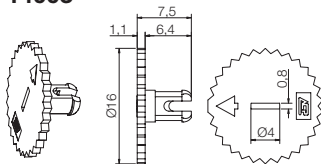


CA14 VD11 // CE14 VD11



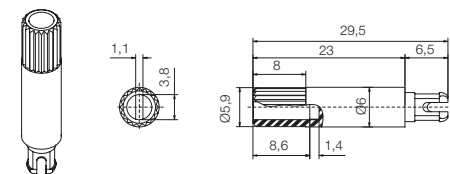
Thumbwheels. CA14 // CE14

14003

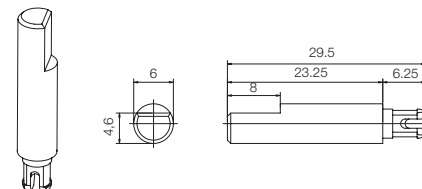


Shafts. CA14 // CE14

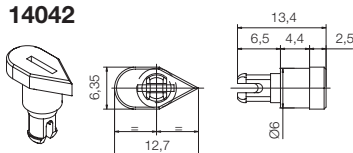
14008



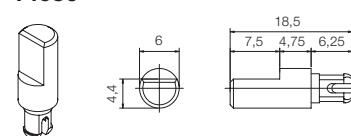
14015



14042



14056



Specifications on this catalogue are for reference only; they are subject to change without notice.

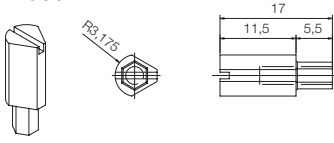
DRAWINGS CA14 // CE14

Tolerances 14 mm (in mm.):

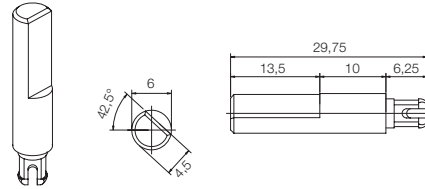
<1	±0,1
1...<10	±0,3
10...	±0,5

Shafts. CA14 // CE14

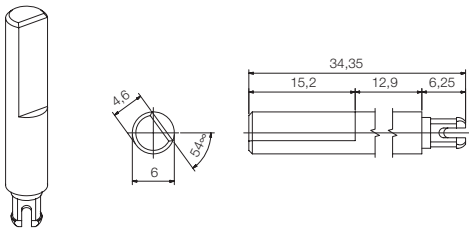
14065



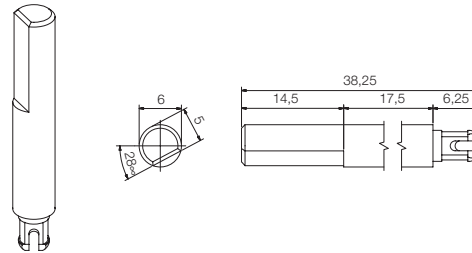
14066



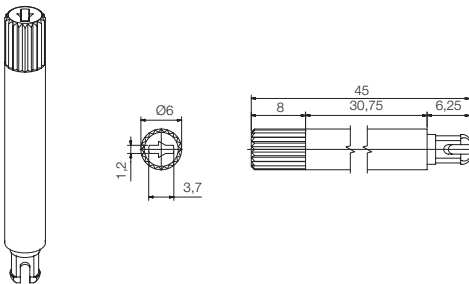
14067



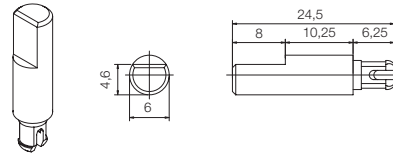
14072



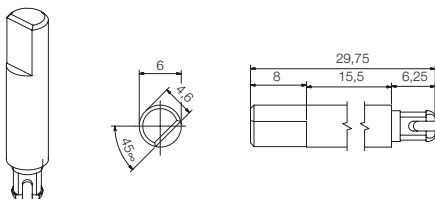
14073



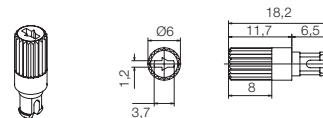
14081



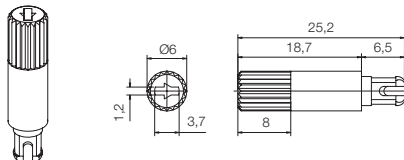
14084



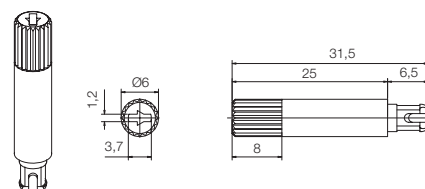
14117



14187



14250



Specifications on this catalogue are for reference only; they are subject to change without notice.