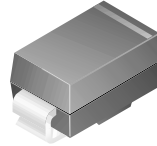


SS12 - S100

Features

- Glass passivated junctions.
- High current capability, low V_F .
- For use in low voltage, high frequency inverters free wheeling, and polarity protection applications.



SMA/DO-214AC
COLOR BAND DENOTES CATHODE

Schottky Rectifiers

Absolute Maximum Ratings* T_A = 25°C unless otherwise noted

Symbol	Parameter	Value								Units
		12	13	14	15	16	18	19	100	
V _{RRM}	Maximum Repetitive Reverse Voltage	20	30	40	50	60	80	90	100	V
I _{F(AV)}	Average Rectified Forward Current .375 " lead length @ T _A = 75°C	1.0								A
I _{FSM}	Non-repetitive Peak Forward Surge Current 8.3 ms Single Half-Sine-Wave	40								A
T _{stg}	Storage Temperature Range	-65 to +150								°C
T _J	Operating Junction Temperature	-65 to +125								°C

*These ratings are limiting values above which the serviceability of any semiconductor device may be impaired.

Thermal Characteristics

Symbol	Parameter	Value	Units
P _D	Power Dissipation	1.1	W
R _{θJA}	Thermal Resistance, Junction to Ambient *	88	°C/W

*Device mounted on FR-4 PCB 0.013 mm.

Electrical Characteristics T_A = 25°C unless otherwise noted

Symbol	Parameter	Device								Units
		12	13	14	15	16	18	19	100	
V _F	Forward Voltage @ 1.0 A	500		700		850			mV	
I _R	Reverse Current @ rated V _R T _A = 25°C T _A = 100°C	0.2		10						mA mA

Typical Characteristics

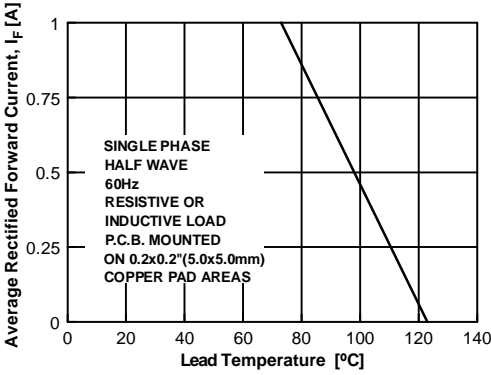


Figure 1. Forward Current Derating Curve

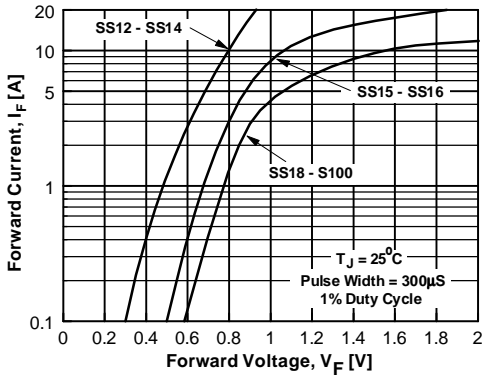


Figure 2. Forward Voltage Characteristics

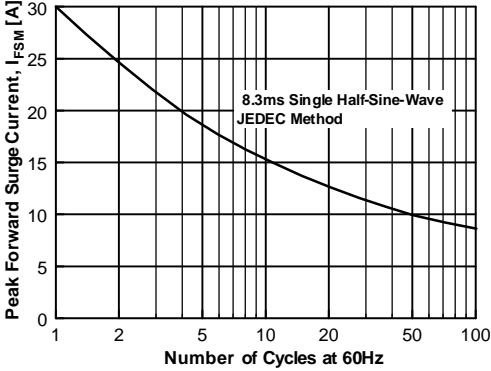


Figure 3. Non-Repetitive Surge Current

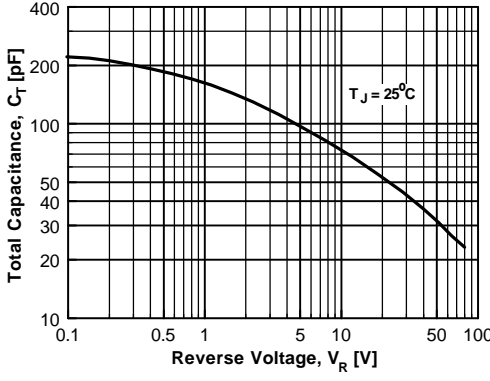


Figure 4. Total Capacitance